

# **1. CHILD PROTECTION POLICY**

Protection of children and caring for them is the ultimate priority of a school, so we are also committed to that. This responsibility includes the identification and timely response to concerns regarding the possible sexual, physical, psychological, social and emotional abuse or neglect of a child.

The school has a safe and supportive environment for students and staff safety and welfare. There will be security, with specific reference to:

1. Students Protection
2. Evacuation procedures
3. Transport

All staff employed in The Model School are responsible for the care, safety and protection of children. This responsibility includes the identification and timely response to concerns regarding the possible sexual, physical, psychological and emotional abuse or neglect of a child. An effective whole-school child protection policy is in place to provide clear direction to staff and other supporting staff about expected behavior when dealing with child protection issues.

The School shall take all possible measures to protect students from any forms of exploitation, abuse, oppression and insult and/or any other physical, sexual or emotional threat, danger or harm.

## **A. Principles of Policy**

- To care every possible ways right from embarking the bus, disembarking and staying in school.
- Regular assembly speech and awareness to the students.
- Maintaining a very strict vigilance in keeping everything safe for the students.
- Displays, signage are being displayed in required places where students need most.

- A proper assembly and school end dispersal are followed to avoid any misconduct.
- Transport departments are very active during arrival and departure of students and buses. They follow every possible procedure for the protection of children.
- Mock fire drills are being practiced with the help of OSH, Security and Local Authority.
- Sessions for students and staff members periodically.

## **B. Policy highlights:**

Our school policy includes:

- 1) Child protection procedures-To protect students from risks that may cause harm or injury while they are in the school's care, traveling to and from the school using School provided transportation means, and moving between, waiting for, and taking part in, all activities organized by the school inside or outside the school campus.
- 2) School management shall ensure the supervision of students 45 minutes before the start of the school day and 90 minutes after school hours.
- 3) The School's Principal shall accept the responsibility for all students whilst they are in the School's care, including traveling to and from the school using School provided transportation means, and while moving between, waiting for, and taking part in all activities organized by the School.
- 4) The school shall provide counseling and School support services, enabling students to have access to a trusted professional counselor, or a social worker, or someone in an equivalent position.
- 5) The school shall protect the confidentiality of students' personal data.
- 6) The school shall protect the confidentiality of reports and investigations related to any kind of student abuse and communications when dealing with the Council and relevant government entities.

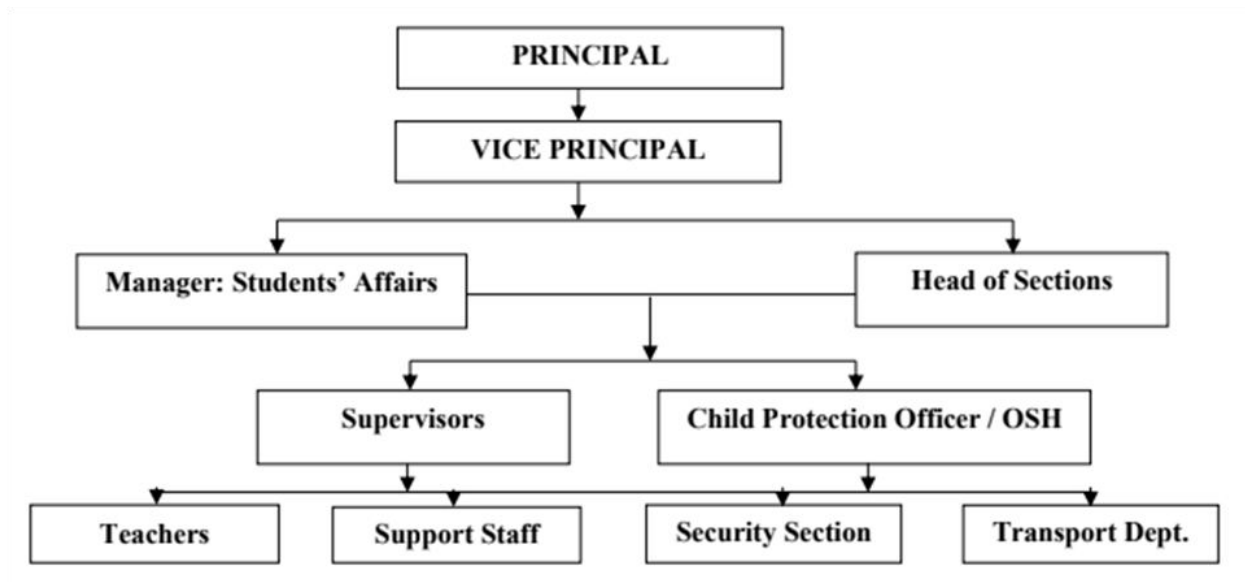
- 7) When handling cases of student abuse, to conduct an investigation, and to maintain clear and scrupulous communications and actions when dealing with relevant government entities such as the Health Authority – Abu Dhabi (“HAAD”), OSH Department (ADEK), social welfare institutions and Police departments.
  - 8) School shall keep relevant records and inform ADEK of such communications if so requested.
  - 9) Where the School uncovers a case of severe abuse to a student outside of School, it must take the matter seriously and follow up the case with the social worker. School shall take the necessary steps to protect the students including by communicating with the parent/guardian to discuss the matter, or by forwarding the case to the relevant official entities in the UAE (social support institutions).
  - 10) Establish and maintain an environment where students feel safe and secure and are encouraged to talk, and are listened to too.
  - 11) Criminal record checks for adults working at the school.
  - 12)
- Rights and responsibilities of students and staff within the proposed school’s community.
- 13) Management and reporting of serious incidents.
  - 14) Health and the distribution of medication.
  - 15) Response to serious incidents and emergencies.

### **C. Purpose:**

The safety and security of the students and staff of The Model School while on school premises or while on school business off school premises is an integral part of the mission of the School. The ability of the school to respond responsibly, quickly and efficiently to emergencies, whether localized or of a general applicability is a goal of the School. Safety education, accident prevention and emergency preparedness are integral to the proper

preparation of our students for response to emergencies, crises, and the prevention of the same.

## D. Committee hierarchy



## Members:

Principal	Dr. V. V. Abdul Khader
Vice Principal	Mr. A M Shareef
Students' Affairs Manager	Mr. I J Nazari
Head of sections	Mr. Abdul Rasheed, Ms. Hasseena Begum, Ms. Varalakshmi
Supervisors	Ms. Sheeja Shaffi, Ms. Noor Ayesha, Ms. Renu, Mr. Rafeeq, Mr. Sultan, Ms. Shanifa, Ms. Sherleena, Ms. Harisa, Ms. Nahla

OSH Officer	Abdul Raheem
Administrative staff	Ms. Ayesha, Ms. Mahalakshmi, Mr. Dibyendu, Ms. Haseena, Ms. Ishitha
Teachers	Mr. Sajeev, Ms. Femina, Ms. Maya Manilal, Ms. Rahila, Ms. Salila, Mr. Ajesh, Mr. Ashar, Ms. Divya, Ms. Zeenath Ashique, Ms. Jasheeda, Ms.
Security section	Ms. Sheeba, Ms. Maya
Transport Department	Mr. Shanahas, Ms. Nafeesa Sabha